

Regenerative Medicine in Small Animals

THE UNIVERSITY of TENNESSEE 
INSTITUTE OF AGRICULTURE
COLLEGE OF VETERINARY MEDICINE

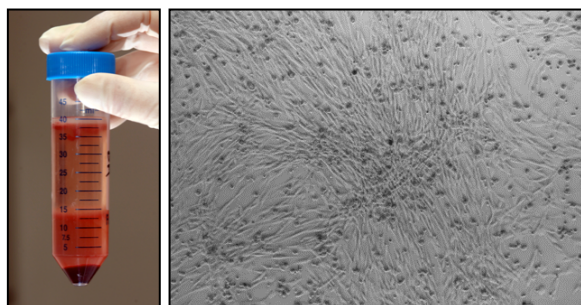
New Adjunctive Treatment at UT VCM Small Animal Hospital

INDICATIONS: osteoarthritis, fractures, cartilage, ligament or tendon damage

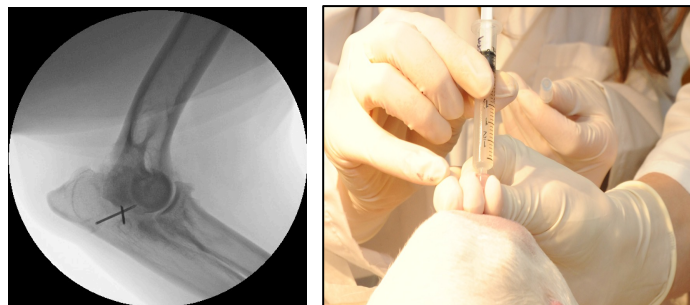


Bone marrow isolation

Culture-expanded bone marrow-derived mesenchymal stem cells (BMMSCs) adjunctive treatment: Bone marrow is harvested for isolation and expansion of BMMSCs in culture. The culture-expanded BMMSC are injected under fluoroscopic guidance or direct visualization.



Culture-expanded canine BMMSCs



Fluoroscopy-guided intra-articular injection of canine BMMSCs

OUTCOME: Patients with arthritis have improved lameness, pain, range of motion, and physical function after intra-articular injections of stem cells.

CONTACT:

CARES, Canine Arthritis Rehabilitation Exercise Sports Medicine

(865) 974-8387 PHONE (865) 974-5554 FAX

or visit the Stem Cells website for additional information at:

<https://vetmed.tennessee.edu/vmc/SmallAnimalHospital/Regenerativemedicine>



We are developing novel therapies and methods for musculoskeletal disorders in order to improve the health of our pets and humans. Please help make a difference: <http://www.vet.utk.edu/giving/giving-makegiftnow.php> Under "Gift Funds" please select "Small Animal Research" with note "Stem cells".