

# Gastrointestinal and Platelet Changes in Dogs with Immune-Mediated Hemolytic Anemia

## STUDY OBJECTIVES

Both antiplatelet drugs and steroids cause occult gastrointestinal bleeding in people. In recent work, we identified gastrointestinal bleeding in 67% of healthy dogs treated for 28 days with prednisone, aspirin, or combination therapy with prednisone and aspirin/clopidogrel. Further we found that antiplatelet effects of aspirin and clopidogrel declined over time.

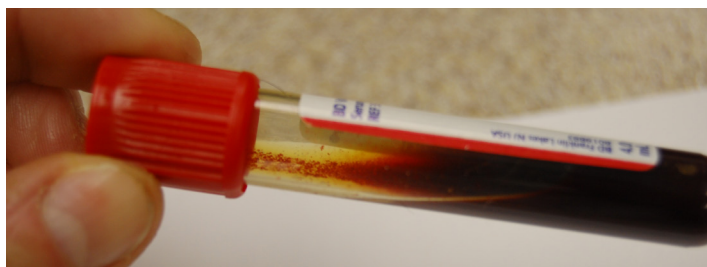
The purpose of this study is to compare clinicopathologic, platelet function, and capsule endoscopy results between newly diagnosed dogs with IMHA treated with prednisone (2-4 mg/kg/d), cyclosporine (4-6 mg/kg BID) and either clopidogrel (2-3 mg/kg/d) or aspirin (2 mg/kg/d) for 28 days.

## INCLUSION CRITERIA

- Dogs with newly diagnosed IMHA weighing  $\geq 10$  lb
- No evidence of infection or neoplasia on CBC, chemistry, UA, urine culture, thoracic and abdominal radiographs

## EXCLUSION CRITERIA

- Previous diagnosis/history of immune-mediated thrombocytopenia (ITP)
- Gastrointestinal disease within the past 3 months
- Exposure to new drugs or any toxins within the preceding 4 weeks
- Treatment with steroids or other immunosuppressive medications for more than 24 hours prior to enrollment
- Treatment with gastroprotectants or anticoagulants within preceding 14 days
- Severe thrombocytopenia ( $<50,000/\mu\text{L}$ ), infection or cancer on screening lab work and diagnostic imaging



## STUDY BENEFITS

Involvement in the study is anticipated to span 30-35 days. This study will pay for the following items for qualifying dogs:

- Examination fees (days 7 and 28)
- CBC, chemistry, UA, urine culture, vector-borne disease testing, and thoracic and abdominal radiographs
- T cell function tests to optimize immunosuppression (days 0, 7, and 28)
- Platelet function testing (days 0 and 28)
- Capsule endoscopy (days 0 and 28)
- Study medications (aspirin or clopidogrel)

## CONTACT INFORMATION

**Dr. Jacqueline Whittemore (PI)**

[jwhittem@utk.edu](mailto:jwhittem@utk.edu)

**Gina Galyon**

[ggalyon@utk.edu](mailto:ggalyon@utk.edu) | 865-755-8151

**Tammy Moyers**

[tmoyers@utk.edu](mailto:tmoyers@utk.edu)

**Dr. Kristen Marshall**

[kmarsh23@utk.edu](mailto:kmarsh23@utk.edu)

**Dr. Dianne Mawby**

[dmawby@utk.edu](mailto:dmawby@utk.edu)

**IACUC PROTOCOL:**

**2492**